

mitsubishi L200

model 2002 →

Ideal
for towing

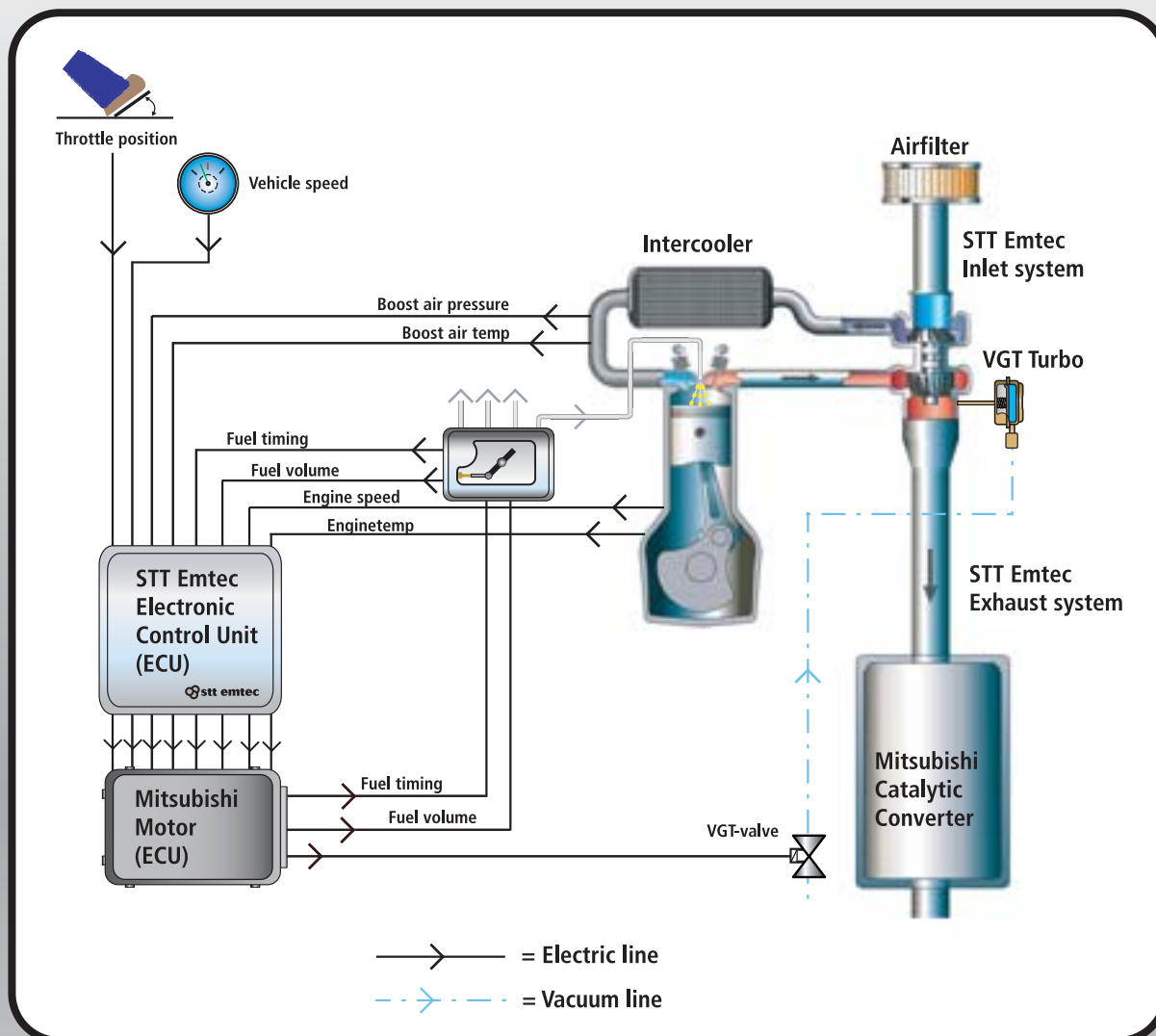


More power and torque -137hp and 290Nm

Your L200 is versatile and powerful. Now you can make it even stronger. With STT Emtec's high performance system you will experience the performance of 137 hp and 290 Nm.



 **stt emtec**
EMISSION & ENGINE TECHNOLOGY



The high performance system

The high performance system consists of three main components:

1. Electronic control unit (ECU).
2. Exhaust system (High flow, Stainless steel)
3. Inlet system (High flow)

The power is increased from 115 to 137 hp, the torque from 240 to 290 Nm.

The system is certified according to actual regulations in Sweden (MTC) and in Germany (TÜV).



The integrated approach

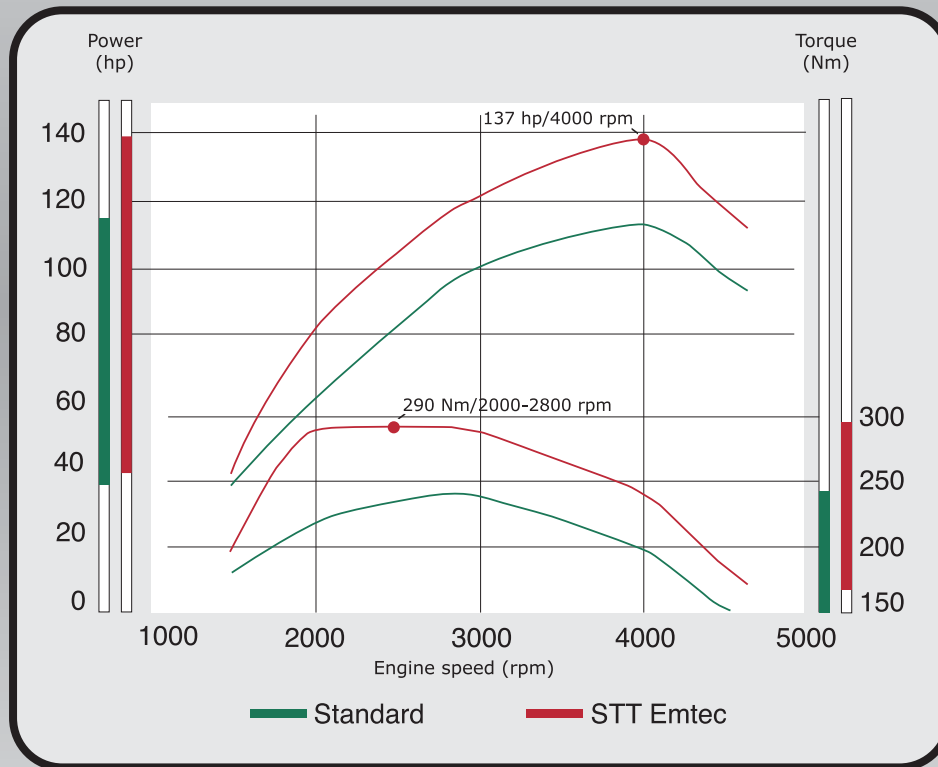
STT Emtec's goal is to develop systems and products which gives these vehicles characteristics and qualities required by the most demanding 4WD enthusiasts.

Unlike traditional Diesel tuning, not only fuel delivery is increased. Extensive modifications to the inlet-, fuel- and exhaust system combined with an electronic turbo charger control guarantee a well balanced air/fuel ratio and extremely low smoke levels.

The system is optimised with respect to:

- Pump- and scavenging losses.
- A flexible boost control over the engine operating range.
- A controlled fuel delivery relative to current air flow.

The result is an engine with substantially improved performance without uncontrolled exhaust emissions.



Power hp (kW) / rpm	Standard 115 (85) / 4000	STT Emtec 137 (101) / 4000
Torque Nm / rpm	240 / 2800	290 / 2000-2800

**Ideal
for towing**



WWW.HOGBERG-GRUPPEN.COM

At STT Emtec quality not only means reliability. It also means good design, ease of use and a high level of comfort. Good engineering is added value.

Enjoy your drive



Kontorsvägen 9, SE 852 29 Sundsvall, Sweden
Phone +46 60 64 10 40, Fax + 46 60 64 10 45
www.sttemtec.com