

Ideal
for towing

mitsubishi pajero 3,2 DI-D

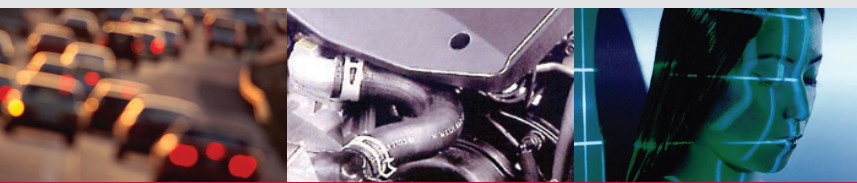
Automatic Model 2002 →



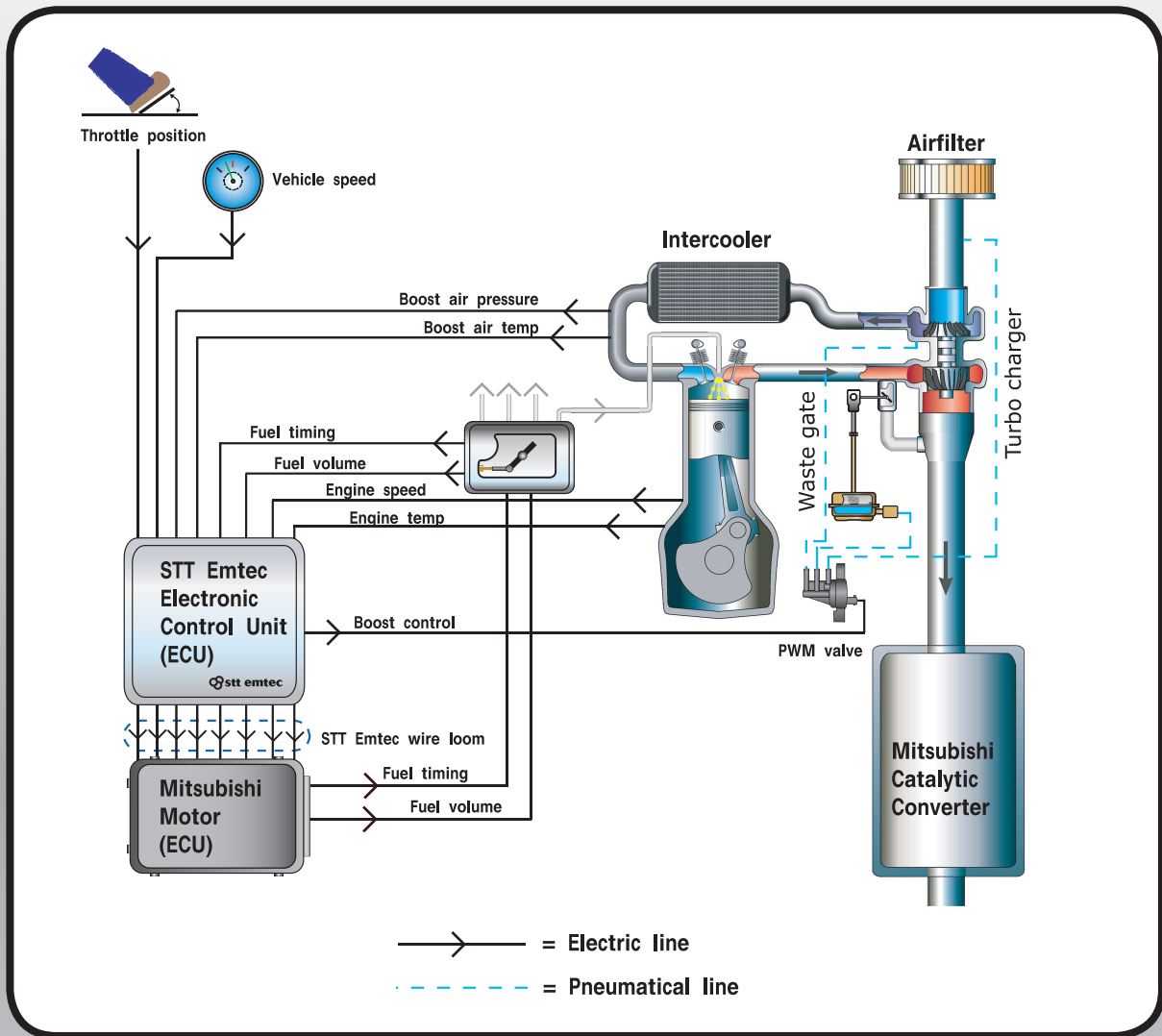
35% increase in power and torque

The Pajero is a versatile and powerful vehicle. Now it can be made even stronger. With STT Emtec's high performance system the power is delivered where needed and not only as peak power at high RPM.

Already at 2200 RPM the power increase is 40 hp and the torque increases with 120 Nm to an impressive 480 Nm. This will give you a completely new driving experience.



 **stt emtec**
EMISSION & ENGINE TECHNOLOGY



The high performance system

The STT Emtec ECU will adapt the signals to the Mitsubishi ECU for increased performance.

- Boost pressure is controlled by the PWM-valve.
- Built in safety functions monitor the system.

The power is increased with 40 hp and the torque with 120 Nm at 2200 RPM.

The system is TÜV-certified.



The integrated approach

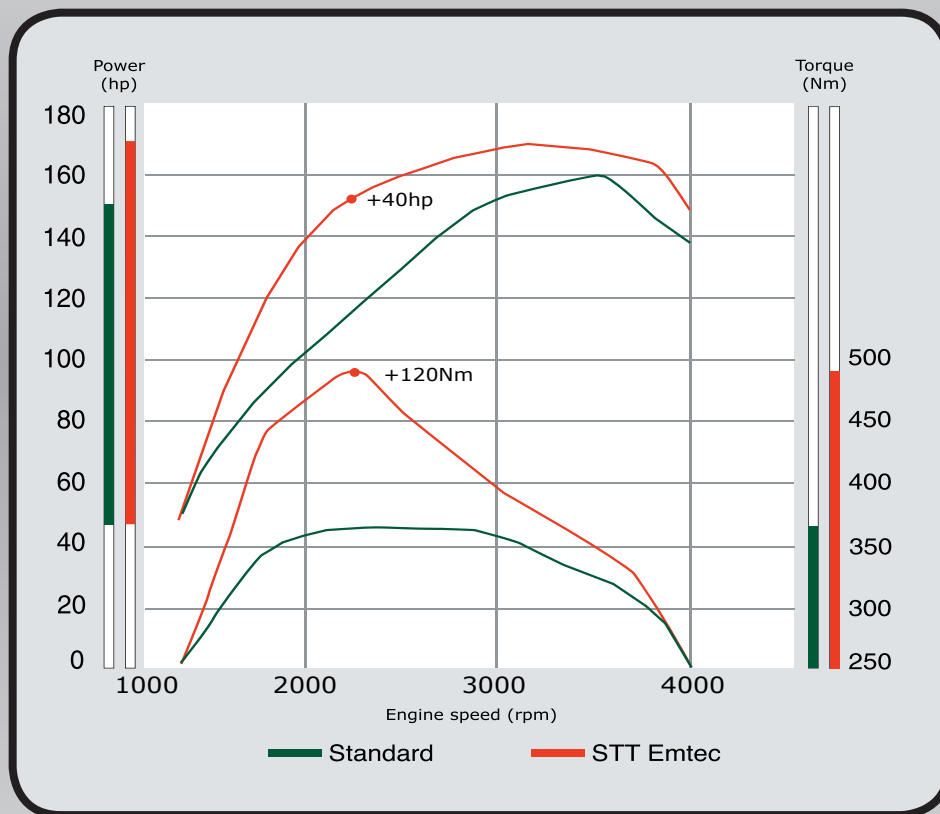
STT Emtec’s goal is to develop systems and products which give these vehicles characteristics and qualities required by the most demanding 4WD enthusiasts.

Unlike traditional Diesel tuning, not only is the fuel delivery increased, but the electronic fuel and turbo charger control system guarantees a well balanced

air/fuel ratio with extremely low smoke levels. The system is optimised with respect to:

- A flexible boost control over the engine operating range.
- A controlled fuel delivery relative to current air flow.

The result is an engine with substantially improved performance together with low exhaust emissions.



Power hp (kW) /rpm	Standard 160 (118) /3600	Stt Emtec 170 (125) / 3200
Torque Nm /rpm	373 / 2000	480 / 2200

**Ideal
for towing**



At STT Emtec quality not only means reliability. It also means good design, ease of use and a high level of comfort. Good engineering is added value.

Enjoy your drive.



Kontorsvägen 9, SE 852 29 Sundsvall, Sweden
Phone +46 60 64 10 40, Fax +46 60 64 10 45
www.sttemtec.com